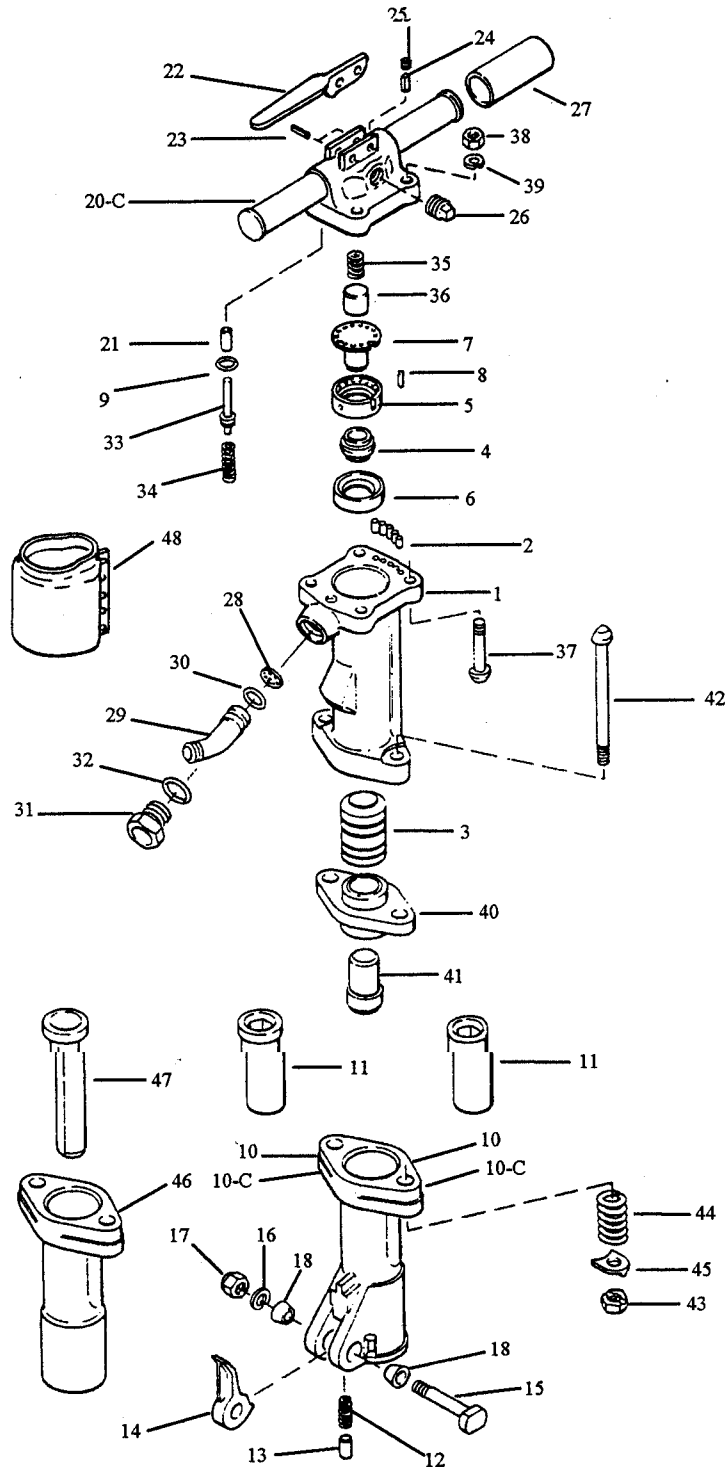




Tools Renewed 800-247-3639 Fax: 860-665-8155

K 125R Redline Paving Breaker





K 125R Redline Paving Breaker

Tools Renewed 800-247-3639 Fax: 860-665-8155

Parts List

Item	Kent P/N	Qty	Description	Item	Kent P/N	Qty	Description
<u>Cylinder</u>				<u>Handle</u>			
1	K05728	1	Cylinder				
2	K04039	5*	Cylinder Nylon Plug	20-C	K05722	1	Backhead Complete (Before SIN 62000)
3	K00042	1	Piston		K18951	1	Backhead Complete (After SIN 62000)
4	K05700	1*	Automatic Valve				
5	K05704	1	Valve Chest				
6	K05705	1	Valve Chest Seat	21	K01294	1*	Throttle Lever Bushing (Item 21 eliminated after SIN 62000)
7	K05702	1	Valve Guide Stem				
8	K05701	1*	Valve Chest Dowel	22	K01296	1*	Throttle Lever
9	K05706	1*	Valve Port "O"-Ring	23	K01292	1*	Throttle Lever Pin (Before SIN 62000)
					K18952	1	Throttle Lever Pin (After SIN 62000)
<u>Front Head</u>				<u>Assembly Parts</u>			
(Items 10-C thru 11 before S/N 58000)							
10-C	KBM05671	1	Front Head Complete 1-1/8 Hex	24	K00591	1*	Oil Control Filter
10	KBM05715	1	Front Head w/K01400 Bushing	25	K00731	1*	Oil Control Plug
11	K01400	1*	Front Head Bushing 1-1/8 Hex	26	K01293	1*	Oil Plug
10-C	KBM05672	1	Front Head Complete 1-1/4 Hex	27	K03019	1*	Grip
10	KBM05716	1	Front Head w/K01401 Bushing	NS	K04157	2	Allen Head Plugs
11	K01401	1*	Front Head Bushing 1-1/4 Hex				
	K18787	1	Front Head Bare	28	K00508	1*	Air Inlet Screen
				29	KBM01300	1*	Air Inlet Swivel(Inc.1639)
				30	K05713	1	"O"-Ring Inlet Swivel
10-C	KBM18782	1	Front Head Complete 1-1/8 Hex	31	KBM01295	1*	Air Inlet Swivel Nut (Inc. 1937)
10	KBM18783	1	Front Head w/K18778 Bushing	32	K01937	1*	Air Inlet Nut "O"-Ring
11	K18778	1*	Front Head Bushing 1-1/8 Hex	33	KBM01285	1*	Throttle Valve w/"O"-Ring (Inc. 1613,1546 "O"-Rings)
10-C	KBM18784	1	Front Head Complete 1-1/4 Hex				
10	KBM18785	1	Front Head w/K18781 Bushing	34	K01291	1*	Throttle Valve Spring
11	K18781	1*	Front Head Bushing 1-1/4 Hex	35	K01298	1*	Plunger Spring(Backhead)
				36	K01297	1*	Plunger (Backhead) (Item 36 eliminated after SIN 62000)
12	K01288	1*	Retainer Spring	37	KBM01126	1	Backhead Bolt Assembly (Inc. 1125 & 9847)
13	K01287	1*	Retainer Plunger				
14	K01136	1*	Retainer	38	K01274	1	Backhead Bolt Nut
15	KO 1132	1*	Retainer Bolt	39	K09847	1*	Backhead Bolt Lockwasher
16	K03997	1*	Retainer Bolt Lockwasher	40	K05709	1	Tappet Seat
17	K00954	1*	Retainer Bolt Nut	41	K00068	1	Tappet
18	K05719	2*	Retainer Bolt Bushing (Rubber) Standard	42	KBM05708	1	Front Head Bolt (Inc. 1129)
NS	K01131	2	Retainer Bolt Bushing (Steel) Optional	43	K01129	1*	Front Head Bolt Nut
				44	K01290	1*	Front Head Bolt Spring
				45	K01289	1	Front Head Bolt Lockwasher
							<u>Accessory</u>
				46	K05646	1	Spike Driver Head
				47	K05647	1	Spike Driver Dolly
				48	K05769	1	Muffler (125R)

*Depicts Interchangeable Parts of 123R and 125R Redline Tools